

Welcome to Advanced Laser



Advanced Laser Corporate Overview



History:

- Established in 1996 in a business incubator in Chippewa Falls, WI
- 1998, built a new building in the Chippewa Falls WI industrial park
- 2004, expanded the building doubling the footprint
- 2007, became ISO 9001 certified
- 2014, expanded the building again doubling the size to 70,000 sqft
- 2016, listed within the Top 40 Fabricators by Fabricator Magazine

Vision

"We Strive to be recognized as an industry leader in metal solutions"

Core Focus

- Customer Experience
- Quality Systems
- Talent Enrichment



Advanced Laser Corporate Overview



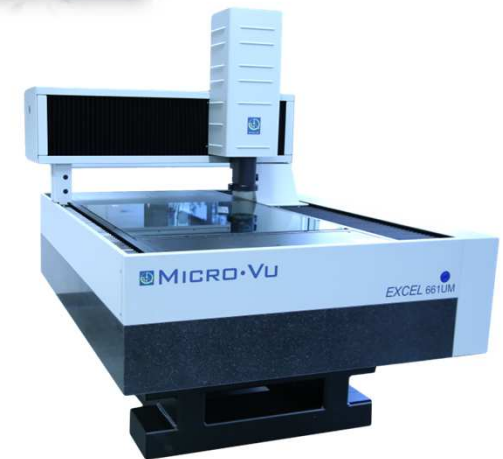
Business Statistics and Credentials

- Privately held metal solutions contract manufacturer.
- Over 110 people dedicated to providing high quality complex metal solutions
- 7-day/week Operation
- Large Engineering group focused on Development, Quality and Continuous improvement
- 70,000 square feet of manufacturing space with the ability to quickly expand
- Industry-leading equipment from top manufacturers
- Paperless production systems
- ISO 9001:2008. FSC:2510,2540,2590,3040,4140,5340,5342,5365,9515. Direct Federal Contractor Cage Code:1V6Y7. Certified Welding - AWS: D1.1, D1.2, D1.3



Quality

- ISO 9001:2008 Certified
- Flexible Quality System
 - PPAPs
 - Customer Specific Qualifications
 - SPC
- ASQ Certified Quality Inspectors
- Equipment
 - Micro-Vu Vision System with Scanning
 - FARO 3D CMM
 - Various Gages, Calipers and Micrometers
 - Calibration Management

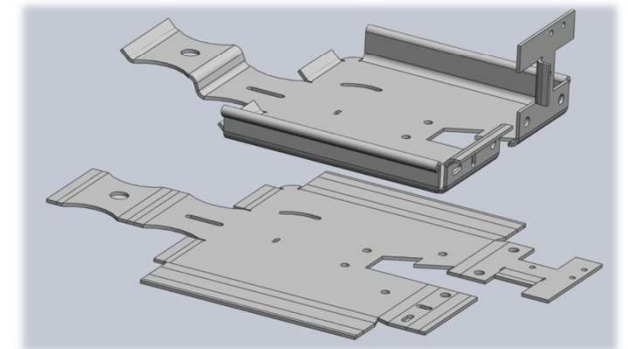
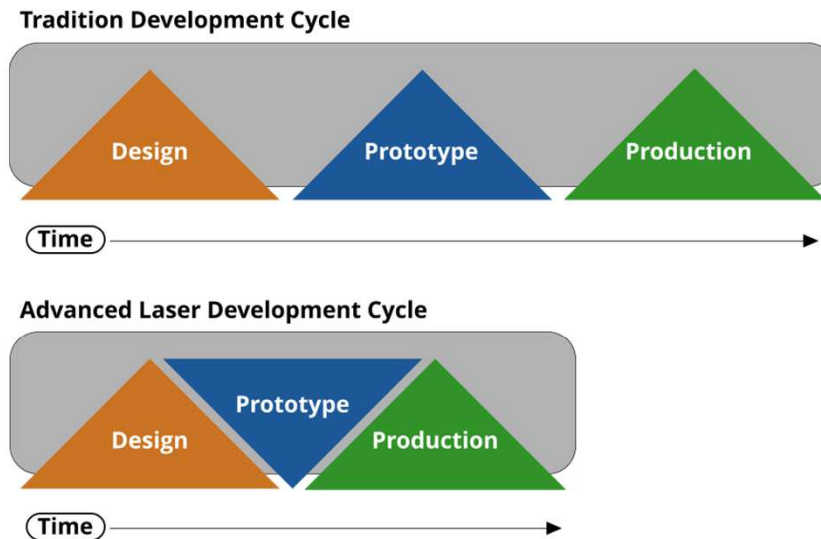


Quality Policy

Advanced Laser will meet or exceed our customers' expectations through our persistent focus on customer service, quality, innovation and continuous improvement.

Development

- DFM (Design for Manufacture) – Eliminate cost/waste
- Design/Development Partnerships – AL can become an extension of your design team to reduce the development timeline and improve results.
- Program Management
- PFMEA's
- Prototyping
- Inspection/Testing



Fabrication & Machining

Fabrication

- Laser Cutting
- Automated Punching
- Hydroforming
- Forming
- Panel Bending
- Conventional and Robotic Welding
 - MIG
 - TIG
 - Micro Welding
- Spot Welding



CNC Machining

- Multi-Axis Machining
- Turning (Conventional and Continuous feed)
- Multiple Material Types (Al, Steel, Titanium, Plastic, Copper, Brass, Stainless, Castings, Forgings, Others)



Coating & Finishing

AL offers a variety of available finishes by working with our approved, best-in-class suppliers:

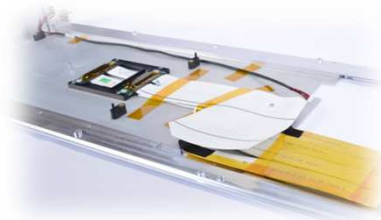
- Paint
- Powder Coat
- E-Coat
- A-Coat (Aquence/Autophoretic)
- CARC
- Tin/Tin Lead
- Chrome
- Nickel
- Passivation
- Chemical Film/Chromate Conversion
- Zinc



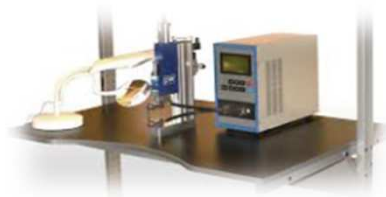
Assembly

AL can support multiple configurations, volumes and unique assembly applications:

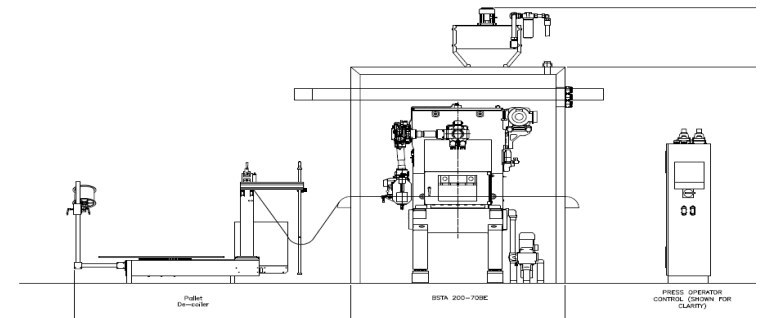
- Electromechanical
- Scalable Manufacturing
 - Work Cell Development
 - Manual, Semi-Automated



- Multiple Configurations of Mechanical Fastening
 - Riveting (multiple types)
 - Swaging
 - PEM insertion
 - Stud Welding
 - Screws
 - Micro Welding

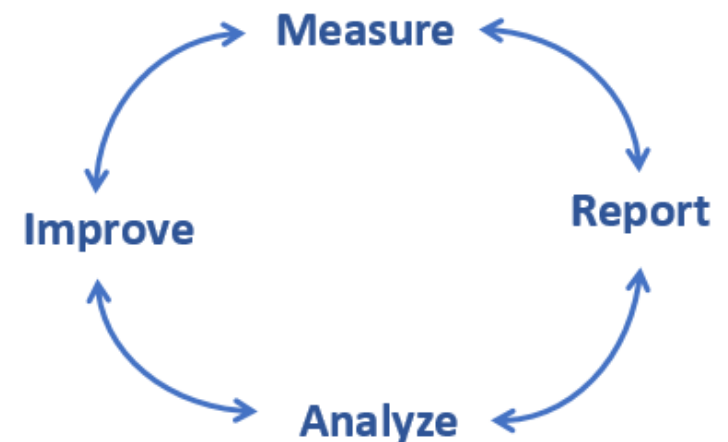


- Gluing
 - Plastic, Aluminum, Steel



Continuous Improvement

- Quarterly Business Review
 - Supplier performance
 - NCMR/CAPA
 - Production summary (delivery/capacity/forecasts)
 - Process performance
 - Equipment condition review
 - Continuous improvement
- CI Development and Tracking
 - Collaboratively develop project hoppers
 - Track progress and report out at quarterly business review
 - Encourage every employee to submit a CI annually.



Supply Chain

- Supply Chain Group focused on maintaining high quality standards and competitive pricing.
 - Purchased content has changed from 60% raw material and 40% value-added components, to 45% raw material and 55% value-added components.
- Currently manage over 120 suppliers
 - Risk-based supplier approval process. Components and suppliers are approved based on combined capability

At AL, we understand that some solutions may be very simple, and others may be much more complex. Whether we are sourcing two components, or hundreds of components from multiple sources, AL has the systems and people in place to handle both. This allows AL to be an efficient and cost competitive, one-stop solutions provider.



Questions

Back Up

ALH₂H

H2H

H2H Defined = *Here 2 Help*

What it is

- An initiative to help AL create an unforgettable experience and lasting value for our customers, thus improving our overall business relationship

Why

- Help ensure alignment with Customer Expectations/Metrics
 - Discuss current issues and address face to face (quality, delivery, forecasts, etc.)
- Help reduce Development Time and Improve Results
 - Discuss new or current design issues
 - Provide DFM and help solve problems real-time
- Improve Timing and Accuracy of Quotes on Potential New Opportunities
 - Discuss best-fit manufacturing processes and understand end use.
- Educate
 - Help customers better understand machining and fabrication so they can be more efficient and effective, and provide better solutions for their customers.